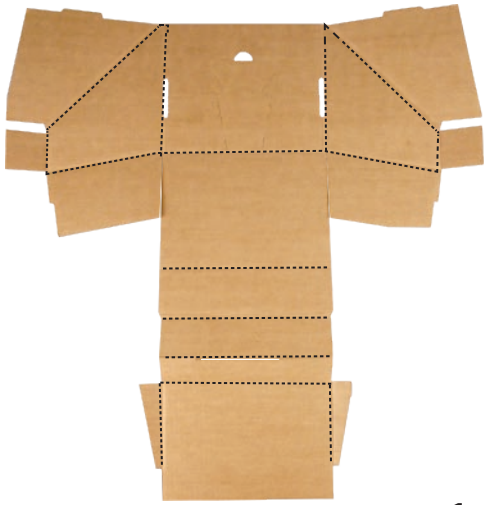


MODEL # CD 8017

8 3/4" Sloped Back Counter Display



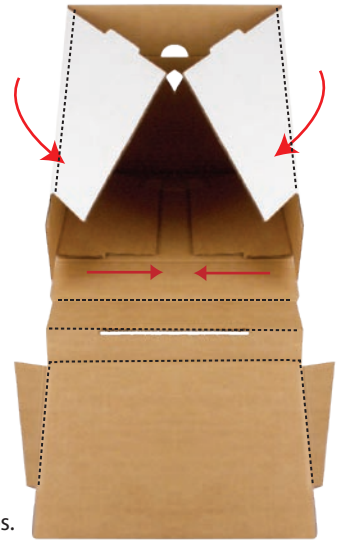
(Flat view)

1



Fold the display in half.

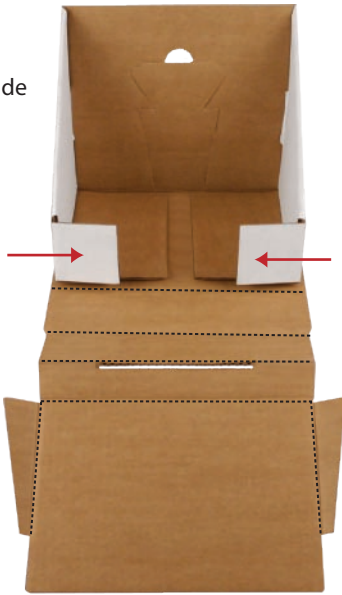
2



Fold in side flaps.

3

Fold in side panels.



4



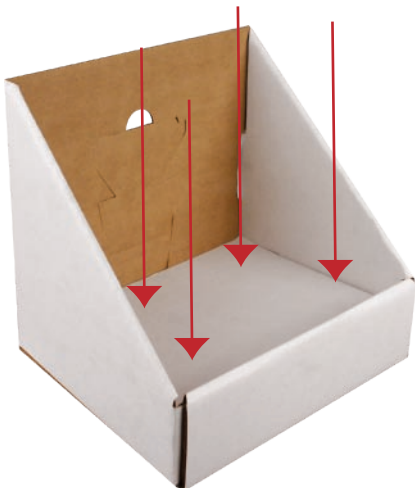
Flip in the front end of the display, and fold in the side panels

5



Create a slope to successfully lock the front end into the display.

6



Push the front end down to the bottom of the display.

7



Slide in header

8