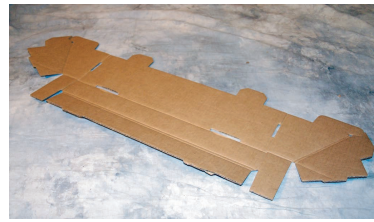


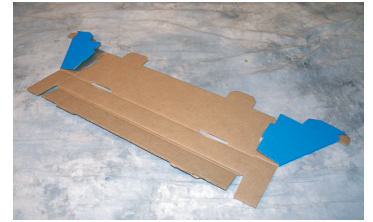
Ten Shelf Double-Sided Display



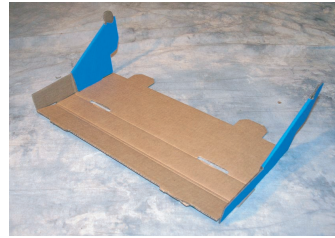
1. Main base
Fold-in sides and fold in bottom tabs.



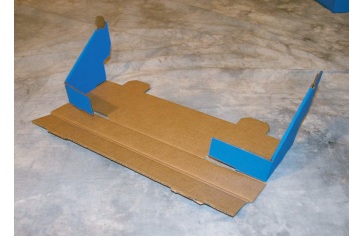
2a.



2b.

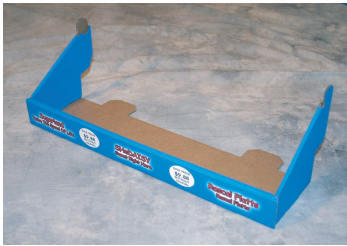


2c.



2d.

2. Shelves
Fold in tabs as pictured.



3. Finished Shelf
Place finished shelf into main base using the tabs from the shelf and placing inserts into the base. A total of 10 shelves, (five per side).



4a.



4b.



4c.

4. Fold in tabs as pictured



5. Place header on top of base for your finished display.